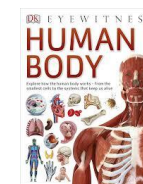
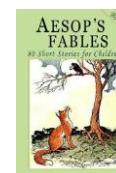
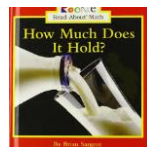
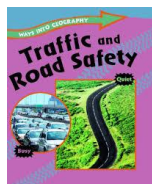
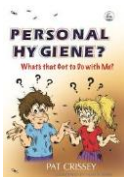


Class: Fawns

Barndale Learning Plan

Term: Spring 1

Books to support our learning.



Communication, Language & Literacy

LC- Listening and responding to texts

We will be learning how to listen to and respond to stories and non-fiction texts. We will be developing ability to sequence a story using pictures. We will be building on ability to answer 'Wh' questions

Phonics – In daily phonics sessions we will develop our knowledge of general sounds, spelling, writing and ability to decode and segment words.

Science

LC- Science and the human body

We will be learning about the key body systems in order to gain a basic understanding of how science can help us look after our health.

As Scientists we will be recording collecting and interpreting data related to heart rate changes when exercising and drawing conclusions the health of individuals

PSHE, Enrichment & Ways to Wellbeing

PSHE -LC –Understanding own personal hygiene.

We will be learning about and participating in practical activities related to personal hygiene and the benefits of following a regular routine.

Citizenship – LC Road skills- Crossing the road using a pedestrian crossing. We will be developing skills needed to cross roads safely using and experiencing a variety of pedestrian crossings.



This half term all students in Fawn class will be working towards a range of cross curricular accredited units from the **ASDAN Lifeskills Challenge** scheme

On completion of each **Lifeskills Challenge (LC)** students will be awarded a certificate outlining skills and processes demonstrated

Humanities

LC – Exploring the local area and community

We will be participating in a range of activities that will enable students to experience and explore a variety of buildings including museums, markets and sports grounds.

Therapeutic Input

Those who receive input from SaLT and Thrive will continue to do so. We will have regular sensory breaks between lessons this half term and explore a range of sensory regulation tools.

Numeracy & Problem Solving

LC – Describing and comparing weight and capacity

We will be developing our ability to describe and compare our understanding of weight and capacity. We will be exploring and experiencing a wide range of objects. Students will be using a variety of resources to make comparisons and expand key vocabulary

Computing

LC – Digital skills for everyday life

We will be developing our ability to demonstrate basic IT skills using a range of digital devices, messaging applications and the internet

The Arts

LC –making decorations for a special event

This half term we will be focusing on design and technology. Designing and making a decoration using a wide variety of materials. Exploring and experiencing different equipment needed to create the decoration

Physical Education

In addition to our weekly swimming sessions in PE we will be developing our skills of team work problem solving and resilience.