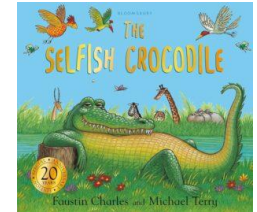
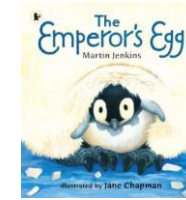
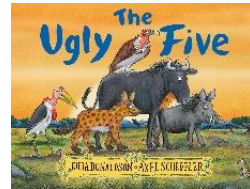
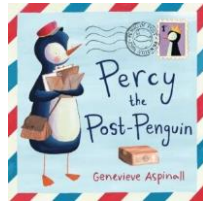
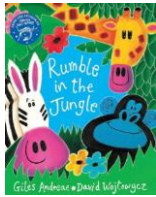


**Class: Frogs**

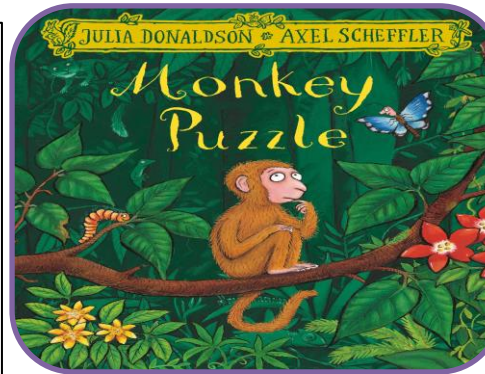
**Barndale Learning Plan**

**Term: 2024-25 Spring 1**



**Communication, Language & Literacy:**

This half-term our focus book will be **'Monkey Puzzle'** by Julia Donaldson. The children will listen to adults read the story before completing activities based on the book. Using puppets and communication boards we will identify and describe the characters as well as answering who, what and where questions. In our daily phonics sessions we will continue to work on our individual targets of recognising and vocalising sounds in isolation and spelling words containing these.



**Super Safari!**

**Art: Which animal patterns can we make?**

In art, we will use a variety of materials and objects with paint to create a range of animal prints. Using our communication boards we will then describe the patterns we have made and guess what animal prints our friends have made.

**PSHE: How can I achieve my dreams and goals?**

In our PSHE lessons we will be looking at things we find tricky and how we can persevere to achieve our goals. We will also be looking at some of the different jobs people can do.

**PE: How can I move the ball?**

In PE this half-term our focus is **Ball Skills**. We will explore making the ball travel in different ways such as kicking, throwing, rolling, and dribbling. Through games we will work on our gross and fine motor skills and develop our accuracy.

**Humanities: Where can bear visit?**

Our focus this half-term in Humanities is **Geography-Places**. Within our lessons we will look at pictures of different places such as jungles, deserts and the Arctic. We will investigate the weather in these places and find out which animals live there.

**Science: Which baby belongs to which animal?**

This half term in science our topic is: **Biology-Animals Including Humans**. We will work on naming a variety of animals and their body parts. We will also try to identify the features of adult animals and their young and play games where we have to match the baby animals to their parents.

**Numeracy & Problem Solving**

This half-term we will be focusing on **Multiplication and Division**. We will begin by sharing physical objects into equal groups, before moving onto using pictorial representations and then numbers. We will also be looking at counting forwards and backwards in steps of 2's using visuals to support us where needed.

**DT: How can we turn the light on?**

In Technology we will be investigating a range of toys and objects to see how we can make them work. We will explore items that can move, make sounds and produce light. In addition to this we will sort objects by their properties.

**Therapeutic Input: How can I regulate?**

The Speech and Language Therapists will continue to visit weekly to help us work towards our individual targets. We will also complete sensory activities set by the occupational therapists, to help us remain regulated.

**ICT: Can you make a pictogram?**

In ICT we will be using the '2Count' programme on PurpleMash to create pictograms to show data that we collect about the class. For example finding out our favourite fruit.