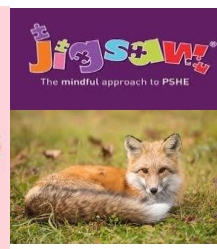
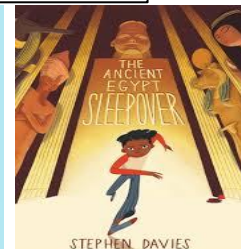
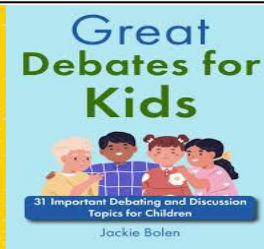
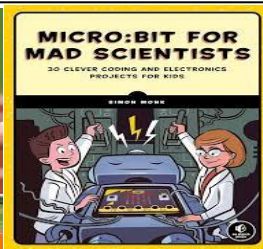
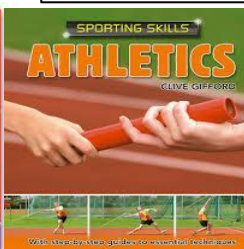
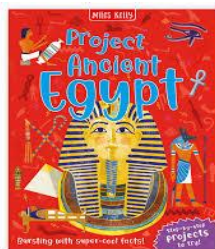
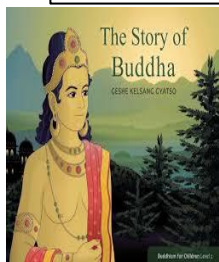


Class: Foxes

Barndale Learning Plan

Term: Summer 2



RE

Can the Buddha's teachings make the world a better place?

For RE this half term, there will continue to be a focus on Buddhist beliefs. This is to show the students how to build on their previous knowledge and to learn about other cultures even if they are not religious. The focus will be on how the world can be a better place according to religious beliefs.

History

What was life like for an Egyptian and how do we know this?

Students will be learning how to 'Walk like an Egyptian' for this topic. This will include looking at how Egyptians used to live their lives in ancient times and placing events in chronological order on a timeline. Students will discover artefacts that may be found to show evidence to ask questions on how Egyptians used to live and to explain historical events.

Physical Education

What skills do I need in Athletics events?

In this half term it's athletics season, as students learn about some of the events that athletics entails. A development of throwing, catching, running and jumping events will take place and students will develop their fine motor skills. Students will also evaluate their performance in order to progress.

Computing

How can you transfer code to micro bit and test it?

Students will begin their work on coding for this particular topic and this will be a light introduction on how coding may work using micro bits. Students will have to use their problem-solving skills to find solutions to debugging certain codes. This will involve a lot of logic and resilience.

Communication, Language & Literacy

How can you get your point across to a number of different audiences?

There will be a focus on discussion texts this half term. This will involve looking at a variety of different ways a discussion can take place. For example, in oracy verbal discussions will help students to be more confident in getting their ideas across clearer. Weekly guided reading sessions will focus on 'The Ancient Greek Sleepover', which also links to our history topic. Students will learn how to be concise yet meaningful in getting their ideas across in a structured way when they write.



Enrichment & Ways to Wellbeing

Weekly swimming lessons will continue to take place to keep students active. In addition, Commando Joe's missions will work on students' leadership and teamwork skills. Weekly PSHE lessons will be focused on managing students' mental health and knowing who to talk to as well as strategies to cope. This half term there will be additional events such as: Barnfest, Sports Day and a school trip for students to look forward to.

Science

What are the properties of materials?

This half term students will test the flexibility, robustness, how soluble and how transparent some materials are in a variety of different experiments. This will allow students to build on their previous knowledge of everyday materials and why they are all different and more suitable for certain things than others. These findings can then be used to write in their books and explain the process, so this can be understood clearer.

Art & Design Technology

What materials are more suitable than others and how can this be tested?

In Art, students will be making their own collage and will use a variety of different materials to see what works best to show off their creativity. This will be shown further in the upcoming Barnfest event, where students will show the school their clay sculptures. In DT, students will share their thoughts on particular materials and structures with evaluative language and clear illustrations of the design process to show their understanding.

Maths & Problem Solving

What kind of things should you look out for when identifying a shape?

This half term students will be learning about shape as well as recapping their previous knowledge of time. This will include identifying the different types of angles and learning how they can be measured accurately. In addition, students will look at the different types of triangles and quadrilaterals to strengthen their knowledge. Students will begin to use real life examples when they recap time.